

1

2

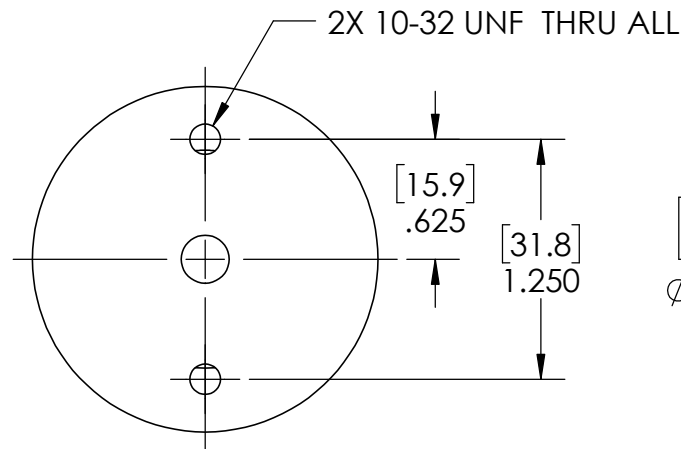
3

4

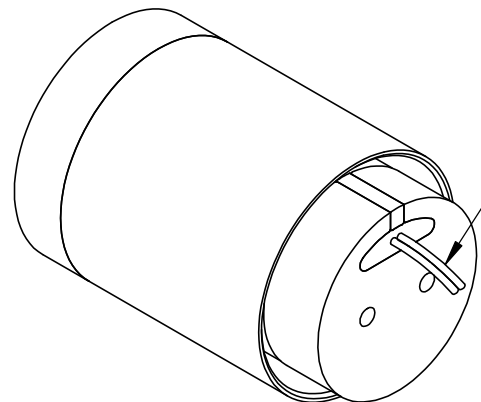
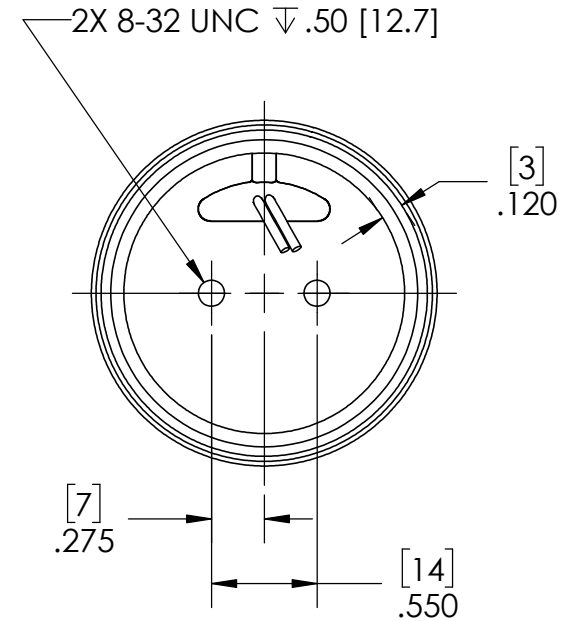
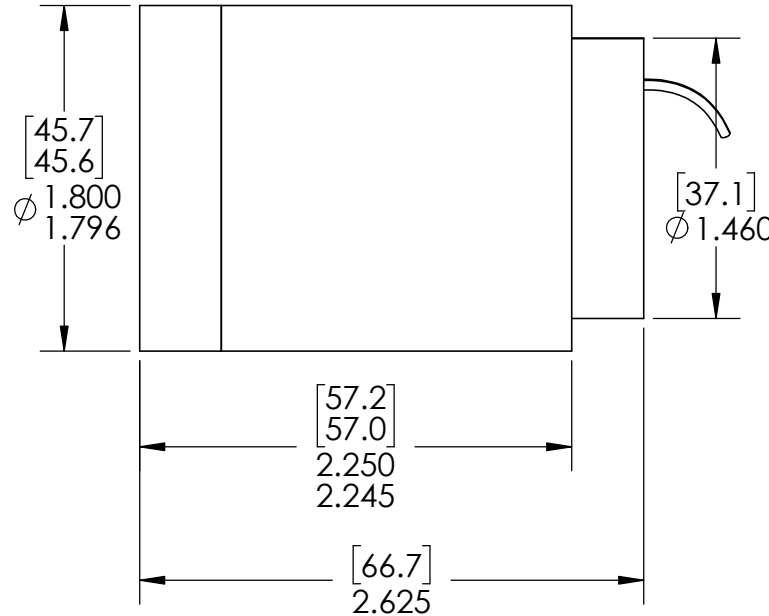
5

REVISION TABLE

REV	ECN#	DESCRIPTION	REV BY	APPROVED	DATE
---	---	Original Drawing	SDC	MPW	6-20-17
A	1992	Changed lead wire callout. Moved lead wires.	SDC	MPW	6-21-17



MOTION



#24 AWG Power Leads (36 in Length)
in Teflon Coated Sleeving
4 Total Leads
Black and Red (Primary)
Blue and Yellow (Redundant)

Note:
Actuator shown at midstroke. When + is connected to Black or Blue,
and - is connected to Red or Yellow, then the Coil Assy will move out
of the Permanent Magnetic Field Assembly.



H2W Technologies, Inc.
Santa Clarita, CA 91350 USA
Tel: (661) 291-1620
www.h2wtech.com

These drawings and specifications are the property of H2W Technologies, Inc. They are issued in confidence and shall not be reproduced, copied, or used without written permission from H2W Technologies, Inc.

UNLESS SPECIFIED OTHERWISE:
All dimensions are in inches
Standard Tolerances are as follows
.XXX ±.005 ANGLES ±.1°
.XX ±.010 FILLETS .010
.X ±.020 CORNERS .010
Remove All Burrs and Sharp Edges

**FOR
REFERENCE
ONLY**

MATERIAL

FINISH

TITLE

Voice Coil Actuator Model #:
NCC08-18-025-1R2C

DWG #

30-1325

REV

A

DATE

6-21-17

SHEET

1 of 2

1

2

3

4

5

A

A

B

B

C

C

D

D

NON-COMM ACTUATOR SPECIFICATIONS

Motor P/N	NCC08-18-025-1R2C	
Device Type	Redundant Coil - Moving Coil	
Stroke	0.60 in	15.2 mm
Radial Clearance	0.120 in / side	3.0 mm / side
Bearing Type	None	
Moving Mass (Permanent Magnetic Field Assembly)	5.0 oz	143 grams
Total Mass	9.3 oz	265 grams
Resistance @ 20C	4.0 ohms \pm 0.5 ohms	
Inductance @ 20C	1.00 mH \pm 0.30 mH	
Electrical Time Constant	0.25 msec	
Motor Constant	0.60 lbs/sqrt(watt)	2.7 N/sqrt(watt)
Force Constant	1.2 lbs/amp	5.3 N/amp
Back EMF	0.03 V/ips	5.3 V/m/sec
Force @ 100% Duty	2.50 lbs	11.1 N
Power @ 100% Duty	18 watts	
Current @ 100% Duty	2.1 amps	
Force @ 10% Duty	7.50 lbs	33.4 N
Power @ 10% Duty	156 watts	
Current @ 10% Duty	6.3 amps	

*The specifications listed above are estimates based on calculated values, but the actual values will be determined based upon the manufactured part.



H2W Technologies, Inc.
 Santa Clarita, CA 91350 USA
 Tel: (661) 291-1620
www.h2wtech.com

These drawings and specifications are the property of H2W Technologies, Inc. They are issued in confidence and shall not be reproduced, copied, or used without written permission from H2W Technologies, Inc.

UNLESS SPECIFIED OTHERWISE:
 All dimensions are in inches
 Standard Tolerances are as follows
 .XXX \pm .005 ANGLES \pm .1°
 .XX \pm .010 FILLETS .010
 .X \pm .020 CORNERS .010
 Remove All Burrs and Sharp Edges

**FOR
 REFERENCE
 ONLY**

MATERIAL

FINISH

TITLE

Voice Coil Actuator Model #:
NCC08-18-025-1R2C

DWG #

30-1325

REV

A

DATE

6-21-17

SHEET

2 of 2